



GAT MONTHLY MEMBERSHIP PROGRESS REPORT

Results as of: 12/31/2022

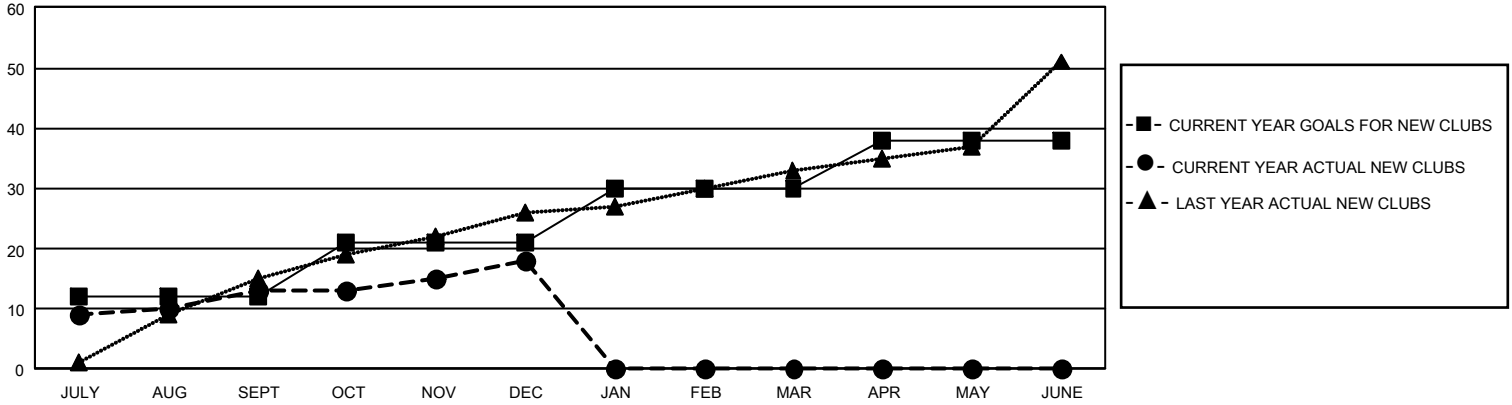
GMT Constitutional Area 8, Group B

REPORT DOES NOT INCLUDE CLUBS IN UNDISTRICTED AREAS.

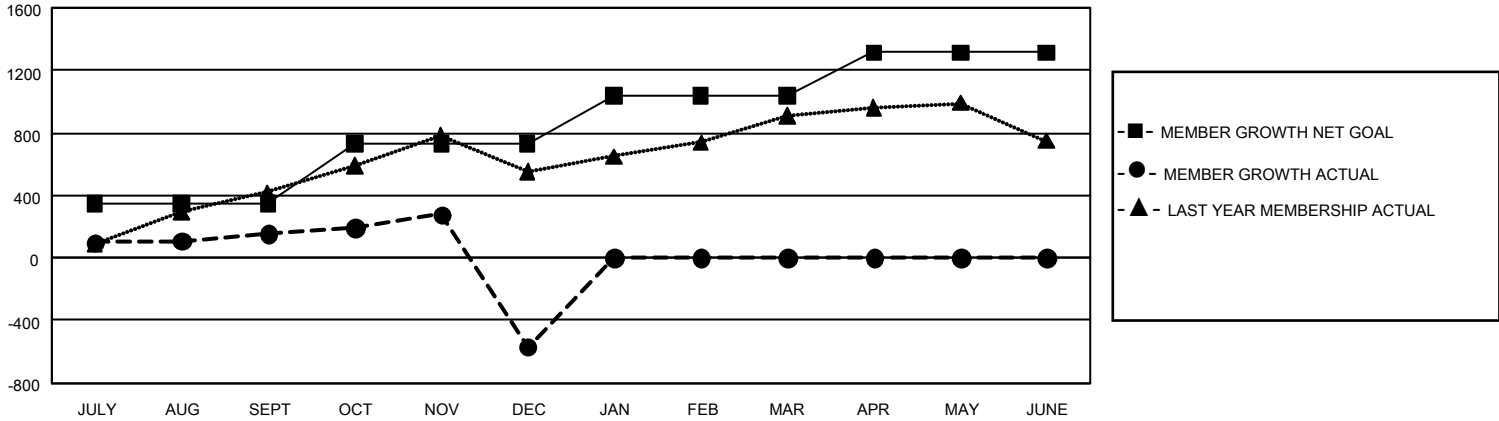
Clubs			
RESULTS FOR 2022-2023			
QUARTER	NEW CLUB GOAL	NEW CLUBS	DROPPED CLUBS
JULY/AUG/SEPT	36	13	8
OCT/NOV/DEC	27	5	30
JAN/FEB/MAR	27	0	0
APR/MAY/JUNE	24	0	0

Members			
RESULTS FOR 2022-2023			
QUARTER	MEMBER GROWTH NET GOAL	MEMBER GROWTH ACTUAL	DROPPED MEMBERS ACTUAL (including transfers)
JULY/AUG/SEPT	350	546	355
OCT/NOV/DEC	380	689	1,353
JAN/FEB/MAR	305	0	0
APR/MAY/JUNE	278	0	0

GOALS AND ACTUAL NEW CLUBS CUMULATIVE



GOALS AND ACTUAL MEMBERS CUMULATIVE



DROPPED CLUBS: 38	226 CLUBS OF 455 ADDED 1 OR MORE NEW MEMBERS	<u>GENDER DISTRIBUTION</u>	
		MALE 6,045 (58.22%) FEMALE 4,336 (41.76%) NON BINARY 0 (0.00%) PREFER NOT TO ANSWER 2 (0.02%)	
<u>DROPPED MEMBERS</u>		CLICK HERE FOR CUMULATIVE MEMBERSHIP DATA	TOTAL FAMILY UNIT MEMBERS 850
DECEASED 25 CLUB CANCELLED 581 OTHER 1,105 TOTAL 1,711	FAMILY MEMBERS PAYING HALF DUES 477		